

**Report of the Director of Environment and Housing**

**Report to North West (Inner) Area Committee**

**Date: 24<sup>th</sup> October 2013**

**Subject: Annual Community Safety Report**

Are specific electoral Wards affected? If relevant, name(s) of Ward(s): Headingley, Hyde Park & Woodhouse, Kirkstall, Weetwood	<input checked="" type="checkbox"/> Yes	<input type="checkbox"/> No
Are there implications for equality and diversity and cohesion and integration?	<input type="checkbox"/> Yes	<input checked="" type="checkbox"/> No
Is the decision eligible for Call-In?	<input type="checkbox"/> Yes	<input checked="" type="checkbox"/> No
Does the report contain confidential or exempt information? If relevant, Access to Information Procedure Rule number: Appendix number:	<input type="checkbox"/> Yes	<input checked="" type="checkbox"/> No

**Summary of main issues**

1. This report provides crime statistics for Inner North West Leeds and gives details of key activity to address crime and anti social behaviour issues. The report recognises the fall in crime in the Inner North West wards during 2012/13 and the challenges faced during the coming year.

**Recommendations**

2. The Area Committee is asked to:
  - Note the contents of the report and offer comments.
  - Note the role of the Area Committee in reducing burglary and other crime, and to consider funding a target hardening grant for private properties as part of their Wellbeing allocation.

## **1 Purpose of this report**

- 1.1 This report is the annual community safety report, providing Members with details of community safety activity undertaken during the last 12 months. The report will also provide details of crime data and make comparisons with previous years.

## **2 Background information**

- 2.1 Leeds aspires to be the best city in the UK with the best community safety partnership and services. Safer Leeds is focusing on the outcome that “people in Leeds will be safe and feel safe in their homes, in the streets and the places they go”. The strategic assessment for 2013/14 has highlighted a number of priorities for Leeds:

- Strengthen the partnership approach to support a more focused approach to tackling Domestic Abuse.
- Continued focus on reducing domestic burglary and its impact across Leeds.
- Effectively tackle and reduce anti-social behaviour in our communities.
- Improve our understanding and approach to deal with Child Sexual Exploitation
- Tackle substance misuse.
- Reduce re-offending.

- 2.2 The North West Divisional Community Safety Partnership is a multi agency partnership chaired by the Police and West North West Homes and includes partners from Fire Service, Youth Service, Youth Offending Service, Safer Leeds and the Community Safety Area Lead Member from each of the four Area Committees in West North West Leeds. The Partnership meets four times a year and sets the strategic direction for partnership work, examining performance and agreeing local priorities. The work of the group is accountable to the Safer Leeds Executive and the Safer and Stronger Communities Board, who receive regular reports of the activity undertaken.

## **3 Summary of key Actions**

- 3.1 A number of factors have an impact on crime and criminologists have placed these factors into three broad categories:
- A suitable target or opportunity, for example valuable items which can be removed relatively easily such as laptops near an open window, vehicles with unlocked doors and a valuable item on show, etc
  - A motivated offender, for example someone whose values or beliefs make stealing acceptable such as drug dependency, someone motivated by greed, etc
  - A low likelihood of getting caught, for example no Police or security guards, a neighbourhood with a low level of reporting crime, no natural street surveillance, etc

3.2 Traditional problem solving techniques aim to reduce crime by impacting on the identified three categories:

- Working to educate the victim (through leaflet drops, face to face crime prevention advice, etc)
- Tackling the offender (known as offender management; visiting known offenders, tenancy action, curfews, criminal sanctions – prison, etc)
- Undertaking work on the built / natural environment to reduce crime opportunities in the locality such as improving natural surveillance or environmental works such as cutting hedges back, secure by design, etc).

3.3 The Divisional Community Safety Partnership have delivered the following key actions during the last 12 months -

#### 3.4 Domestic abuse

Domestic abuse work is primarily delivered through 3 strands - working to support the victim, taking appropriate action against the perpetrator and raising the awareness and confidence of officers in identifying domestic abuse and making appropriate referrals to special and support agencies. Examples of this include:

- A Domestic Violence MARAC (Multi Agency Risk Assessment Conference) chaired by Safer Leeds. A number of partners attend the conference to discuss high risk domestic violence cases. The focus is on supporting victims and having strong co-ordinated action against perpetrators. Regular attendees include the Primary Care Trust, Social Care, West Yorkshire Police and Leeds Domestic Violence Services.
- An awareness campaign heavily supported by the Leeds Domestic Violence Team. The campaign works with partners during the days of action on Domestic Violence between 25<sup>th</sup> November and 10<sup>th</sup> December, linking in with the world wide initiative. Awareness is raised through a co-ordinated media campaign and activities with partner organisations such as schools to promote the White Ribbon Campaign.
- In Inner North West all the children's centres have achieved at least Level 1 of the Safer Leeds domestic violence Quality Mark. Little London Children's Centre has recently been awarded Level 3. Little London Children's Centre has also piloted work with abusive dads; this is shortly to be rolled out to Early Start Teams across the city.
- The Domestic Violence Team delivered an awareness raising presentation to staff from across the Open XS cluster and this was followed up with training for staff from primary schools in the area and a separate session for practitioners who work with secondary age children.
- The Open XS cluster has submitted a successful bid for a small grant to do some creative work on Domestic Violence with young people from City of Leeds School. This will include 6 sessions delivered through PSHE lessons focussing on healthy relationships and culminating in a piece of positive art work that can be used as a focal point in the school and referred to for future sessions. This work will be delivered in partnership with Youth Point.

- Open XS Cluster are running an initiative called Little Voices. This is targeted group work for children who are identified as being affected by domestic violence.

### 3.5 Burglary

Burglary remains a high priority for the City and the North West Division. A City-wide strategic burglary group meets monthly, lead by Chief Superintendent Dave Oldroyd. The group oversees the work delivered in the localities, identifies strands of work which need to be tackled from a city-wide prospective and shares good practice. Following the Outcome Based Accountability meetings, multi agency burglary plans were developed for Hyde Park, Hawksworth Wood and Headingley. Significant local initiatives have included -

- The top 10 street burglary initiative, engaging with residents and providing crime reduction advice, promoting Immobilise.com, referring into target hardening schemes and promoting laptop and phone tracking software
- Joint work with the Universities to engage with students about burglary. This includes student volunteers working with the Police on doorstep engagement and providing crime reduction advice, promoting Immobilise.com and laptop tracking software, using the university portals and screensavers to get crime messages out and directing university security patrols to areas of concern through Police briefings.
- Environmental audits to address any environmental issues which could impact on burglary such as overgrown hedges, obscured street lighting and broken street lighting.
- Taking tenancy enforcement action against prolific offenders and the introduction of a Local Lettings Policy in Hawksworth Wood to manage offending behaviour and provide incentives to engage with support agencies
- Delivering multi agency action days to convey a variety of messages and raise awareness about burglary and other crimes using leaflets, doorstep engagement and working with partners to have a greater impact by undertaking joint visits. 6 action days were held this year.
- Delivering Operation Optimal targeting patrols to areas where statistics says a burglary may occur and visiting burglary victims and their neighbours (either side and back / front).
- Promoting Immobilise.com and the national property register, through mailing lists, door step engagement and working with the Universities to increase registration on Immobilise.com through the automatic registration systems for new students.

#### 3.5.1 Leeds ASB Team (LASBT) West North West Performance Data

Leeds Anti-Social Behaviour Team receives requests for service (Enquiries) via the contact centre, the local housing office, West Yorkshire Police, Stop Hate UK, Elected Members and local MP's. The team has a number of core performance aims:

1 & 2 Day response to Enquiries from Contact Centre - LASBT West received 1045 enquires in 2012/13. 50.6% of these enquiries relate to ALMO properties. 100% of enquiries were responded to within service standards.

Initial Contact with Customer within 10 days (SSTD3) – 98.7% of customers were contacted within 10 days of a case being opened.

10 day Customer Update (SSTD5) – The year-end cumulative performance for this measure showed that 95.4% of customers were contacted every 10 days.

Initial Contact with Perpetrator within 10 days (SSTD4) – The year-end cumulative performance for this measure showed that 91.4% of perpetrators were contacted within 10 days of a case being opened.

Customer Satisfaction with service - 4 week case onset survey – 89.1% of respondents stated they were either very satisfied or satisfied, with the service they had received.

Customer Satisfaction with service and case outcome – Closed Case survey - 95.2% of respondents stated they were either very satisfied or satisfied, with the service they had received. 95.8% of respondents were either very satisfied or satisfied, with the investigation carried out by the Case Officer and 91.0% were satisfied with the case outcome.

### 3.5.2 Anti-Social Behaviour Caseload

Table 1 shows a breakdown of the cases investigated and closed in the Inner North West area during 2012/13.

**Table 1**

<b>Ward Boundaries</b>	<b>Number of Cases Investigated</b>
Hyde Park & Woodhouse	32
Headingley	5
Kirkstall	59
Weetwood	50

### 3.5.3 Anti-Social Behaviour Case Studies by Ward Area

This section provides a summary of some of the ASB cases that have been investigated by the team during 2012/2013.

#### Hyde Park and Woodhouse

- A suspended possession order was granted in relation to cannabis cultivation at an address on Oatland Crescent.

#### Headingley

- LASBT in partnership with Inner North West NPT assisted in resolving a noise nuisance issue where squatters had taken over a private rented property on

St Anne's Road. This was one of the first actions taken under the new Squatter Legislation.

- Injunction with power of arrest granted in relation to a council tenant on Victoria Road using threatening and intimidating behaviour against a neighbour. The perpetrator has also now surrendered their tenancy.

#### Kirkstall

- Injunction gained against a private resident in the Kirkstall area in relation to harassment and abuse of staff at Kirkstall Housing Office.
- A council tenant was evicted from a maisonette on Queenswood Drive in relation to both burglary offences in the locality and also the cultivation of cannabis in the property.

#### Weetwood

- Undertaking gained against a council tenant for threatening violence against a member of staff

### 3.6 Child Sexual Exploitation (CSE)

CSE is a new area of work developed during the last year. There is a City-wide CSE Steering Group chaired by Children's Services. The group aims to develop processes and services to meet the challenges presented by CSE. The group has recently approached Safer Leeds and asked for help to develop and shape local delivery for CSE work.

- The safeguarding of individuals at risk of CSE is delivered through the existing safeguarding process of joint working between the Council and Police. These Officers work very closely together to share information and often work from the same office in 2 Great George Street to ensure an integrated approach.
- The Area Community Safety Co-ordinator role has taken a lead on CSE work locally and chairs a CSE Practitioners forum for West North West Leeds. The forum looks at identifying local CSE gaps in services with a view to finding local solutions or working with the Leeds wide CSE Steering Group to raise and address concerns. Local partners involved in the Practitioners forum include Cluster Co-ordinators, Targeted Services Leads, School Nurses, Police and Social Workers. The group has met on 2 occasions to date and aim to meet quarterly. Work is underway to identify the training needs of frontline staff to help develop a training plan for West North West Leeds and develop better joint working to tackle this issue.
- In June 2013 a Practitioners Workshop for CSE was held to provide an opportunity to raise awareness of the issues relating to CSE. The workshop was organised by the Area Community Safety Co-ordinator and involved presentations from Blast and ISIS who are 2 agencies developing work in CSE. The session was a taster for front line staff such as social workers, healthcare professionals, school staff, housing officers and Police officers. The workshop was attended by over 30 people. Further sessions are planned for frontline staff and practitioners.

### 3.7 Reduce Re-offending

Reduce Re-offending is delivered in partnership with West Yorkshire Police, Probation, Youth Offending Service, Leeds City Council and other agencies. There is both a mix of partnership working at city-wide level to engage with prolific offenders and locally co-ordinated work to engage with offenders who are at risk of becoming prolific. Typically, the engagement aims to address the causes of offending and help reduce the opportunities to offend by helping an offender secure training or a work placement.

The local group is chaired by Safer Leeds and includes support from West Yorkshire Police, Probation, Youth Offending Service, Signpost, Connexions and other partners who come together to look at additional focused support provided to individuals involved in burglary and other priority crime. The group works across the locality and seeks to address the support needs of individuals and families to help them to stop offending. This support could be through training opportunities provided through Connexions, additional support by Youth Offending Service, Signpost working with the family offering intensive support. Since its inception the group has discussed 32 cases and closed 12 cases due to either engagement with services and reduction in offending or incarceration. The number of cases is fluid with about 20 at any given time.

### 3.8 Substance misuse

Substance misuse continues to be an active priority for the Neighbourhood Policing Team. Members of the public continue to provide the Police with positive leads about Cannabis and other types of drug dealing. One of the significant emerging issues for the city is the sale and use of new psychoactive substances, so called legal highs. Safer Leeds has a three stranded approach to this new area of work:

#### **Intelligence gathering**

- Operation Nightshot established on Police systems and intelligence sought from across the partnership.
- Questionnaires distributed to adult drug users through the drug intervention program.
- Liaison with agencies who provide drug intervention work.
- Partnership work with event organisers.
- Local intelligence gathered to identify local retail outlets and understand the customer profile.

#### **Education**

- All Safer Schools Police Officers provided training input and package to deliver in secondary schools.
- Media strategy developed with key features on Look North and YEP and national newspapers including the daily Mail and The Sun.
- Key partners provided training input including elected members, youth services.
- Billboard campaign and marketing material produced.

## **Enforcement**

- Warning letters served to all retail outlets.
- Dedicated CPS lawyer established.
- convictions for selling intoxicating substances to under 18's - first conviction nationally using this legislation to tackle new psychoactive substances
- Ongoing prosecution under Sec 9 Misuse of Drugs Act - selling articles for the preparation and administration of controlled drugs in respect of articles with cannabis leaves etc on
- Market management have served warning letters to all relevant stall holders

## **4.0 CCTV (Delegated Function)**

- 4.1 LeedsWatch provide a monitoring service for public space surveillance cameras covering open spaces across Leeds. The CCTV control room is staffed, and cameras are recorded 24 hours per day, 365 days a year. The service also provides two mobile CCTV vehicles for deployment within communities across Leeds. The main objective of the service is to reduce crime and the fear of crime through the use of CCTV technology, leading to improved crime prevention, and an increase in the detection and prosecution of offenders. The LeedsWatch service works in partnership with a large number of internal and external partners such as; Urban Traffic Control (UTC), Emergency Planning, Leeds Anti-Social Behaviour Team (LASBT), West Yorkshire Police, WY METRO and other Local Authorities across the West Yorkshire sub-region
- 4.2 CCTV is one of a number of Service functions delegated to Area Committees. The Area Committee's role in relation to this function is to 'maintain an overview of the service in the Committee area and receive regular information about it.' There are currently a total of 9 public space surveillance CCTV camera's monitoring the Inner North West Committee Area, via the Central CCTV Control Room at Middleton, they are located in the following areas-
- Hawksworth Park – Burley Road Car Park – Headingley – Hyde Park
  - Within the Inner North West Committee Area there have been a total of 7 arrests on camera. 1 arrest for driving over the prescribed limit, 1 racially aggravated public order offence, 1 assault, 1 damage to vehicle, 1 possession of Class B, 1 handling stolen goods and 1 attempted theft.
  - CCTV footage has been requested in relation to 116 further incidents within the Inner North West area for a various number of offences which provides evidence in relation to the criminal investigations relevant to identification of suspect(s).
- 4.3 The CCTV Vans are now primarily used to respond to reports of noise nuisance. The out of hours noise nuisance service supports the work of the Leeds ASB Teams by providing evidence in relation to noise nuisance cases.
- 4.4 Supporting the city's most vulnerable residents is also a priority. The LeedsWatch service is now responsible for providing a first response to Care Ring alarms. On call 24 hours a day, 7 days per week, this service responds to alarms from mainly



elderly clients who may have fallen or find themselves in need of support. Officers attend to the alarm call and contact emergency services, family members or other appropriate individuals, staying with the client to provide support and re-assurance until further help arrives.

- 4.5 In order to ensure that the service is making the best use of its resources, a full service restructure has now commenced with a view to offering best value for the department. In particular, discussions are taking place with the Anti-Social Behaviour Teams, Environmental services, West Yorkshire Police and Housing Leeds to look at how the various services can better link together to improve service delivery and provide a more pro-active response to issues of public concern.

## **5.0 Area Committee Funded Projects**

- 5.1 During 2012/13 the Area Committee funded Police Off-Road Bikes which proactively patrol green spaces and work with the Neighbourhood Policing team to tackle the nuisance caused in communities by off road bikes. The project also worked closely with the Councils Park Ranger service to undertake joint patrols and deliver advice and training to schools and groups who may undertake bike riding.
- 5.2 During 2013/14 the Area Committee has funded proactive noise patrols consisting of a Council Security Officer and Police Constable proactively patrolling Inner North West Leeds responding to noise related problems. The Service covers the period 8pm to 4am. The original brief for the initiative was to provide 4 days of patrols over a 6 week period to cover the periods of students leaving and arriving in Leeds. The initial 3 weeks of patrols during the time students were leaving has been delivered and the days for the project to run during Freshers has been altered to run on Fridays and Saturdays only to achieve better value for money. This means the service can run for 6 weeks for 2 days per week.

## **6.0 Analysis of Crime Figures**

- 6.1 Appendix 1 provides an overview of crime figures for all 4 wards which make up Inner North West Leeds (Headingley, Hyde Park & Woodhouse, Kirkstall and Weetwood). The figures presented cover the period April 2010 – March 2013 and relate to all crime types, including Fraud & Forgery, handling stolen goods, sexual offences and other thefts. The difference and percentage columns relate to a year on year comparison for 2011/12 and 2012/13.
- 6.2 During this period crime has fallen in all of the wards, with significant reductions delivered in Hyde Park and Woodhouse ward (707 fewer crimes, a 24% reduction) and Weetwood Ward (389 fewer crimes, 24% reduction). It is important to note that these figures include all crimes as mentioned above. The following paragraphs will explore these outcomes in more detail.
- 6.3 The subsequent Appendices (numbered 2 – 5) will concentrate on the following crime types: burglary, robbery, theft of and theft from vehicles, criminal damage and violent crime.
- 6.4 Appendix 2 provides an overview for Headingley ward and shows that all crime reduced, burglary reduced by 43% (178 fewer victims) and robbery saw a drop of

60% (37 fewer victims). During this period, the following work was delivered in Headingley:

- Co-ordinated multi agency action to tackle noise and ASB in the Granbys, Ash Road and Brudenells.
- Two action days were held in the Harolds, Thornevilles and Victoria Road area tackling graffiti, overgrown hedges and other environmental issues (broken streetlights, potholes, etc).
- Operation Allison concentrated on the Ash Road area providing crime reduction advice, promoting free laptop/mobile tracking software and promoting/signing up residents to Immobilise.com
- Targeted action to tackle ASB in Headingley Town Centre focusing on aggressive beggars.

The biggest challenge for the ward relates to burglary and anti social behaviour in the form of noise/rowdy behaviour. A number of initiatives have been developed in partnership between the Council, the Police and the Universities, to educate and raise community safety awareness amongst the new student community each year. Each year a new set of students require education about burglary reduction, staying safe, keeping noise down, environmental responsibilities, etc. As this is resource intensive, it is welcomed and appreciated that the Universities and Student Bodies assist in this task. Teams of student volunteers regularly go out into the community to knock on doors and talk to both student and permanent residents about community safety issues. This work has gone from strength to strength with improvements being made each year in terms of the organisation of the work, how it is operationally delivered and the outcomes and achievements.

6.5 Hyde Park & Woodhouse ward achieved a decrease across all crime types, appendix 3, reductions of note include; reducing burglary offences by 261 (43%), and reducing robbery offences by 85 (46%). During this period the following work has been delivered:

- Operation Optimal - visits to burglary victims and their neighbours and target patrols to hotspot areas
- Operation Allison - peer-to-peer door knocking providing crime reduction advice, focusing on burglary hotspots
- Promotion of Immobilise.com property marking, including door knocking students in University premises to increase sign-ups before students move out of halls of residence
- three action days concentrating partnership attention to the area to tackle crime and environmental issues such as binyards, overgrown hedges, broken street lights, graffiti
- Operation Bullseye targeting receivers of stolen good
- Work through the University Student Union to educate students about leaving doors / windows open through the knowledge website and social media
- Operation Walksafe focusing Police and University patrols to burglary and robbery hotspots. Regular briefings between University security staff and Police to refresh these patrols and joint patrols in partnership using up to date robbery hotspot information to direct patrols

Burglary and robbery are significant challenges for Hyde Park. The ward had recorded the highest number of burglaries for a considerable amount of time, until recently. Whilst the area is by no means the highest for robbery it has remained a consistent reoccurring problem. The results achieved this year are testament to the work of West Yorkshire Police, Leeds City Council, the Universities, Student Unions and other partners in working to raise awareness of how residents (both students and permanent) can reduce the risk of being a victim of burglary, focusing on the key nominals of concern who are active in the area, and actively targeted patrols. Student volunteers have made a tremendous impact during this year; engaging with residents to promote Immobilise.com to register property, undertaking environmental visual audits, encouraging residents to install computrace and prey software tracking for laptops. West Yorkshire Police have also undertaken some sterling work with West North West Homes (now Housing Leeds) to engage with residents in Woodhouse and undertake targeted tenancy enforcement work to reduce the threat of robbery and burglary.

6.6 Appendix 4 provides details about Kirkstall ward and shows a rise in theft from motor vehicle and theft of motor vehicle (10 offences and 12 offences, respectively). All other crime types experienced decreases, with burglary reducing by 145 (40%). examples of some of the work undertaken in Kirkstall ward include:

- Three action days engaging with residents about crime and anti social behaviour in Hawksworth Wood (2 separate occasions) and Burley
- The introduction of a local lettings policy for Hawksworth Wood
- An environmental visual audit of Burley (Haddons and surrounding streets) undertaken to identify and refer any environmental issues impacting on crime and the fear of crime for example overgrown hedges, obscured or broken street lighting, graffiti, untidy communal areas.

Kirkstall ward has experienced significant success in reducing burglary over the last two years. The emerging challenge is to maintain that success during the current financial year. Current figures show that Kirkstall ward is bucking the trend and burglary has a risk of rising during this financial year. Concerted multi agency effort is needed to bring the burglary figures back to a level where reductions will be achieved. This is difficult in a climate of reducing resources coupled with the need to maintain reductions in burglary in neighbouring wards. Housing Leeds has started on a program to replace vulnerable locks in key areas of the ward. The Area Committee may consider matching this lock replacement program through the provision of a 50% grant to privately owned properties vulnerable to burglary.

6.7 Weetwood ward experienced reductions in all crime types other than theft of motor vehicle which increased by 8 (appendix 5). Burglary reduced by 76 (31% and robbery reduced by 25 (64%). During this period the following activity of note was delivered:

- A Safer School Officer talked to pupils about student safety and awareness
- An action day was held in the Iveson/Tinshill area to address environmental issues and raise awareness about reporting anti social behaviour.

- An action day was also held in the Beckett Park area focusing on burglary and anti social behaviour, this was delivered through Operation Allison peer to peer discussions and crime reduction advice.

Whilst Weetwood ward has experienced lower levels of burglary numbers than its neighbouring Inner North West wards, when examining the burglary rate per 1000 properties the ward is highlighted as an area of concern. Therefore, an Outcome Based Accountability session was held with the Universities, Student Unions', Leeds ASB Team, Members and other partners to examine the areas of burglary concern in more detail and agree relevant actions to deliver a reduction in burglary. Members may consider funding a target hardening program through the provision of a 50% grant to properties vulnerable to burglary.

## **7 Corporate Considerations**

### **7.1 Consultation and Engagement**

The projects highlighted in this report will include consultation and engagement under the theme of crime and anti social behaviour with the aim of providing crime reduction advice and to increase reporting.

### **7.2 Equality and Diversity / Cohesion and Integration**

Engagement events and projects take account of equality and diversity in their delivery. Considerations such as date, time, venue and access all have an impact on equality and diversity in relation to ensuring events are accessible to all members of the community.

### **7.3 Council Policies and City Priorities**

Effectively tackling crime and anti social behaviour is a strategic priority in the Safer Leeds Plan 2011-2015.

### **7.4 Resources and Value for Money**

Projects and work highlighted in this report have been funded through a mixture of Safer Leeds, Area Committee, West North West Homes and both Universities. Further opportunities for partnership funding will be explored through the coming year.

### **7.5 Legal Implications, Access to Information and Call In**

There are no legal implications or access to information issues for this report. This report is not subject for call in.

### **7.6 Risk Management**

Risk implications and mitigation are considered for each project.

## **8 Conclusions**

- 8.1 The overwhelming community safety priority for Inner North West Leeds is undoubtedly burglary; to tackle this considerable partnership work is delivered to address burglary hotspots and communities vulnerable to burglary. Specific work has been delivered in Hawksworth Wood, Headingley and Hyde Park using the Outcome Based Accountability model to identify the issues impacting on burglary in these areas and developing actions to address burglary. More recently the model has been used to develop a burglary plan for Weetwood. Action plans have been used to introduce new initiatives and pieces of work to address specific problems in each of the localities and the continued support from Members to tackle burglary is welcomed.
- 8.2 As with many urban areas, the Inner North West Leeds has a number of community safety challenges and anti social behaviour in the form of noise and rowdy behaviour is a re-occurring problem. However, the Area Committee funded initiative to tackle noise nuisance has achieved some positive results. Multi agency working continues to improve with joint action days being held and smarter working with residents, holding welcome meetings and visits, communicating expected behaviour through door to door engagement and letters and working with landlords to highlight concerns. New ways of working have including coming back to residents to evaluate and review initiatives and seeking to improve them for future years.
- 8.3 Robbery is also a risk; there is a need to continue to educate and raise awareness particularly amongst young adults about steps which can be taken to minimise the risk of becoming a robbery victim, especially late at night. The enforcement work undertaken last year during the summer had a particularly positive effect on robbery figures. The challenge is to maintain the positive outcomes achieved in this reporting period, during a time of budget constraints and cuts.
- 8.4 West Yorkshire Police have commenced discussions about how they may respond to budget pressures and work has started to reduce the number of Divisions and Senior Police staff in Leeds. The proposal is that Leeds reduces to one division serving the whole city, commanded by one Chief Superintendent and reducing the number of superintendents, Chief Inspectors and Inspectors. Current proposals suggest 11 neighbourhood teams aligned to Area Committees and one team dedicated to the city centre. Members have been briefed on the proposals and their views sought. West Yorkshire Police are exploring co-location options with partners to ensure front line services are enhanced.

## **9.0 Recommendations**

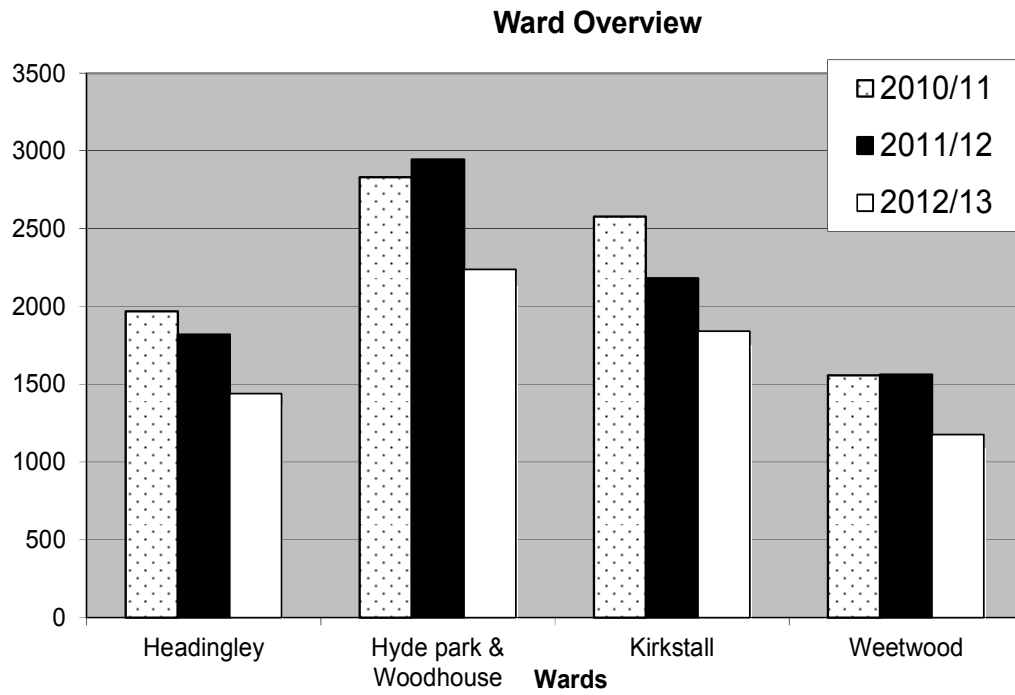
- 9.1 Members of the Inner North West Area Committee are requested to:
- Note the contents of the report and offer comments
  - Note the role of the Area Committee in reducing burglary and other crime, and consider allocating Wellbeing funding to support a burglary reduction scheme.

## **10.0 Background documents**

None

## Appendix 1

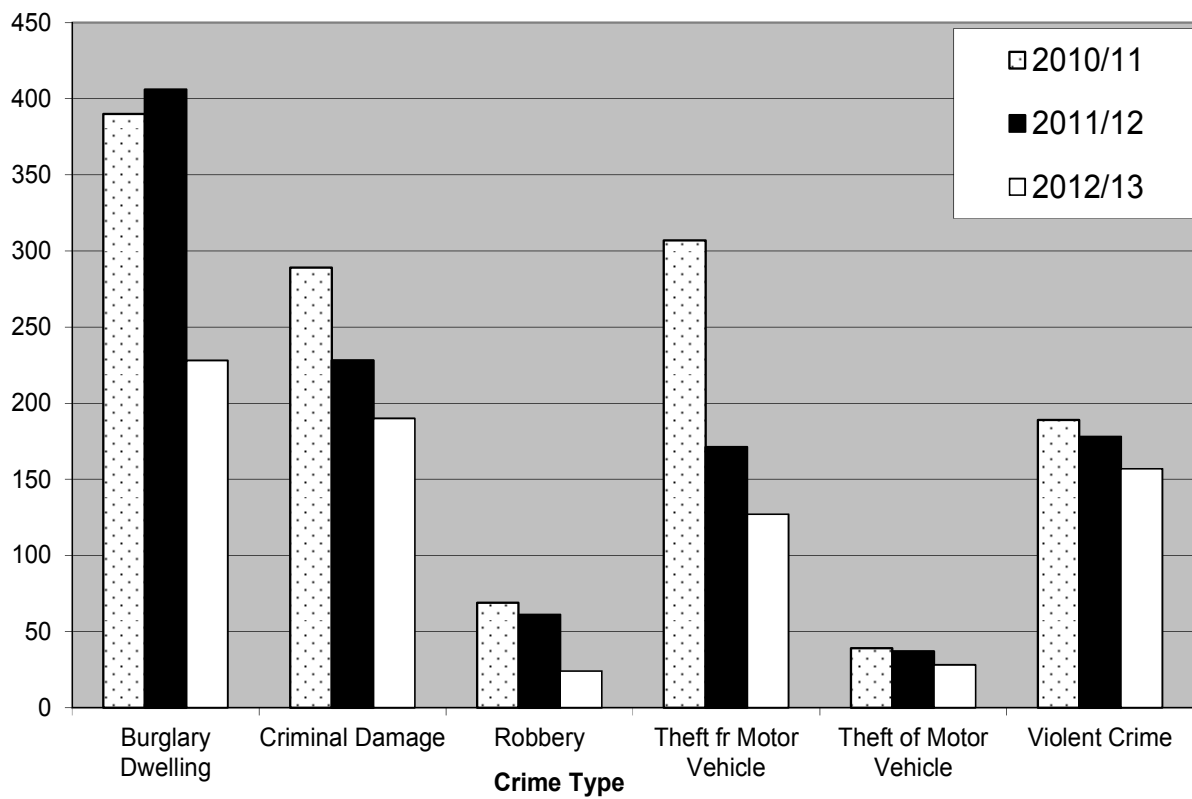
Ward Name	2010/11	2011/12	2012/13	# Difference	% Difference
Headingley	1969	1818	1439	-379	-20%
Hyde park & Woodhouse	2831	2946	2239	-707	-24%
Kirkstall	2578	2181	1842	-339	-15%
Weetwood	1558	1562	1176	-386	-24%



## Appendix 2

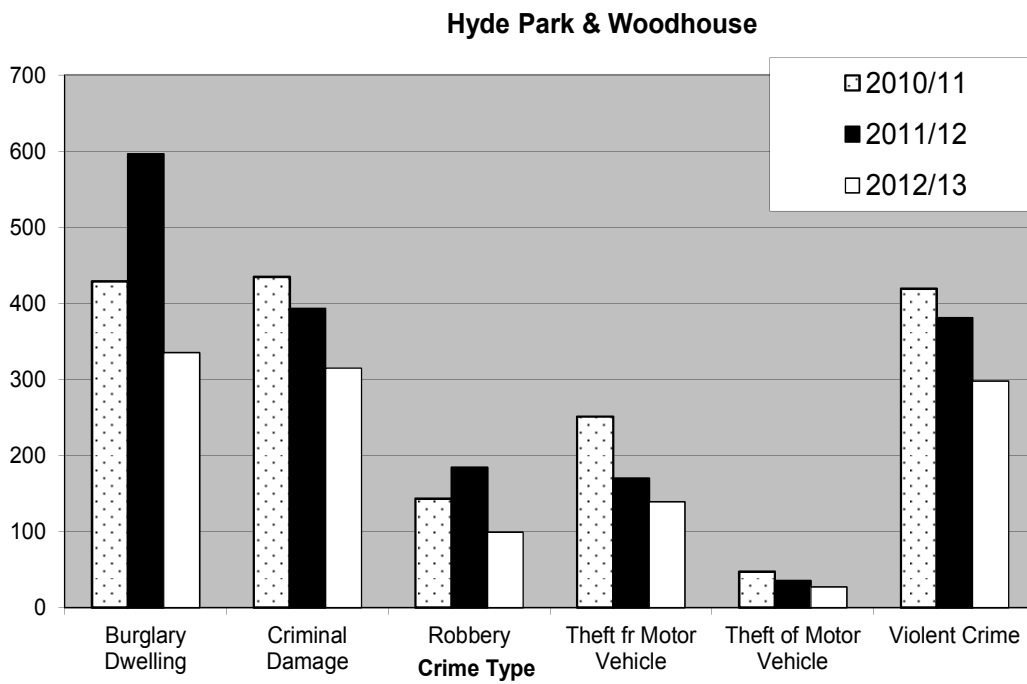
Headingley Ward	2010/11	2011/12	2012/13	# Difference	% Difference
Burglary Dwelling	390	406	228	-178	-43%
Criminal Damage	289	228	190	-38	-16%
Robbery	69	61	24	-37	-60%
Theft fr Motor Vehicle	307	171	127	-44	-25%
Theft of Motor Vehicle	39	37	28	-9	-24%
Violent Crime	189	178	157	-21	-11%

### Headingley Ward



### Appendix 3

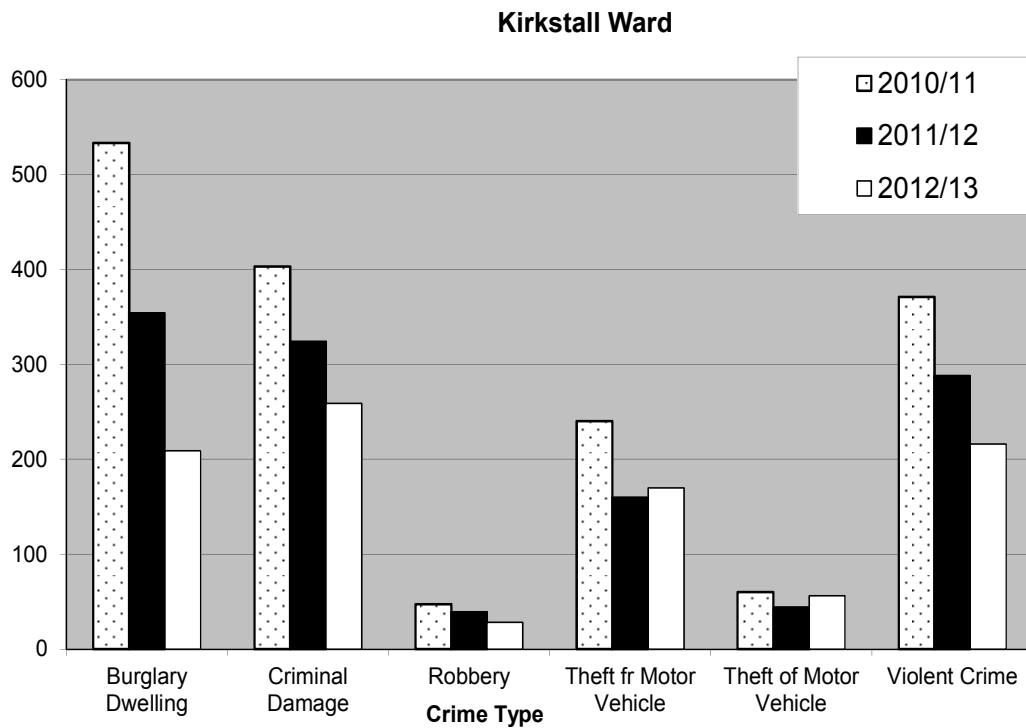
Hyde Park & Woodhouse	2010/11	2011/12	2012/13	# Difference	% Difference
Burglary Dwelling	429	596	335	-261	-43%
Criminal Damage	435	393	315	-78	-19%
Robbery	143	184	99	-85	-46%
Theft fr Motor Vehicle	251	170	139	-31	-18%
Theft of Motor Vehicle	47	35	27	-8	-22%
Violent Crime	419	381	298	-83	-21%





## Appendix 4

Kirkstall	2010/11	2011/12	2012/13	# Difference	% Difference
Burglary Dwelling	533	354	209	-145	-40%
Criminal Damage	403	324	259	-65	-20%
Robbery	47	39	28	-11	-28%
Theft fr Motor Vehicle	240	160	170	10	6%
Theft of Motor Vehicle	60	44	56	12	27%
Violent Crime	371	288	216	-72	-25%



## Appendix 5

Weetwood	2010/11	2011/12	2012/13	# Difference	% Difference
Burglary Dwelling	297	245	169	-76	-31%
Criminal Damage	228	244	204	-40	-16%
Robbery	24	39	14	-25	-64%
Theft fr Motor Vehicle	234	221	175	-46	-20%
Theft of Motor Vehicle	39	18	26	8	44%
Violent Crime	187	199	142	-57	-28%

